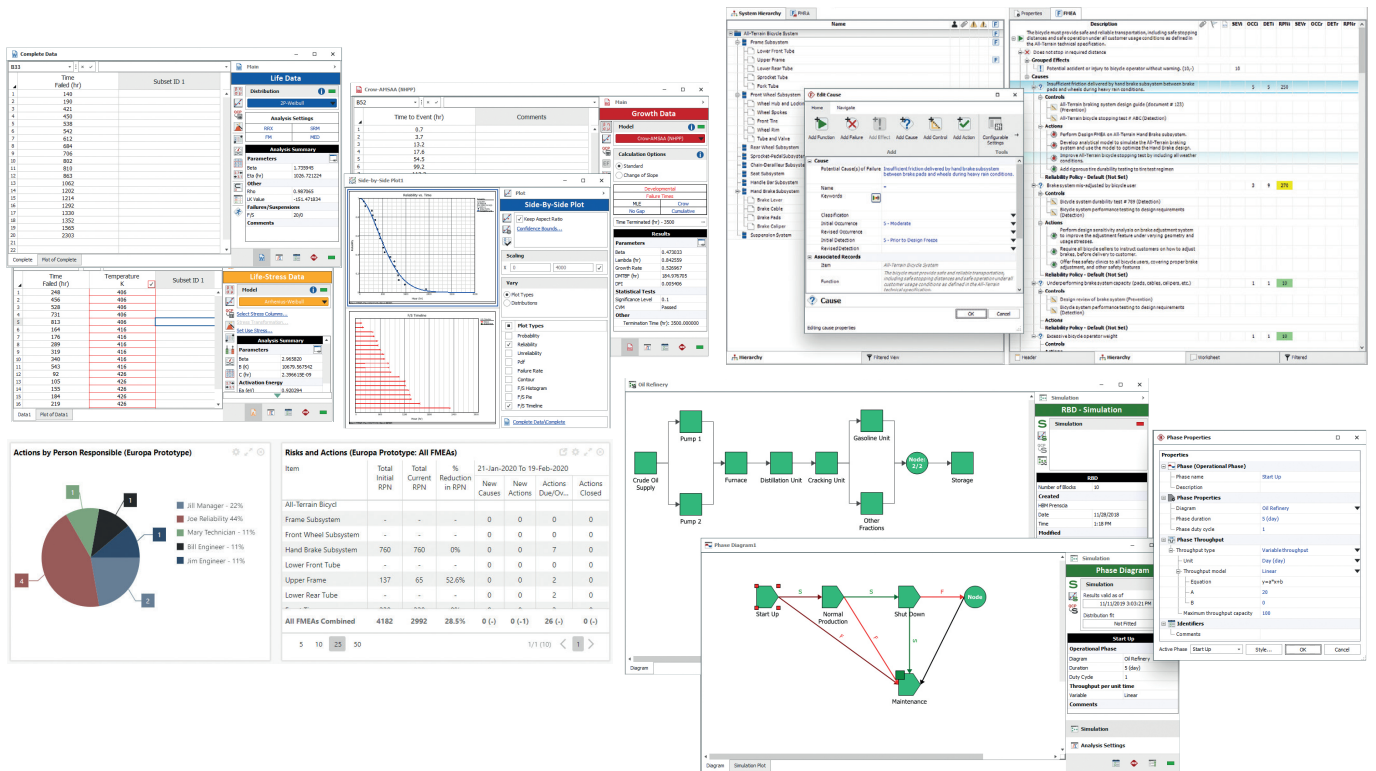


RELIASOFT OVERVIEW

# ReliaSoft products and services

INDUSTRY LEADER WITH ESTABLISHED REPUTATION

Founded in 1992, ReliaSoft software from HBK empowers reliability, quality and maintainability engineers to transform data into decisions. These innovative tools provide a powerful range of reliability and maintainability software solutions to facilitate a comprehensive set of reliability engineering modelling and analysis techniques, such as life data analysis, accelerated life testing, system modelling and RAM analysis, reliability growth, FRACAS, FMEA and RCM analysis to meet and improve reliability of your products, processes and optimise maintenance planning. We are the leading reliability solution provider supporting all stages of an asset's life cycle.



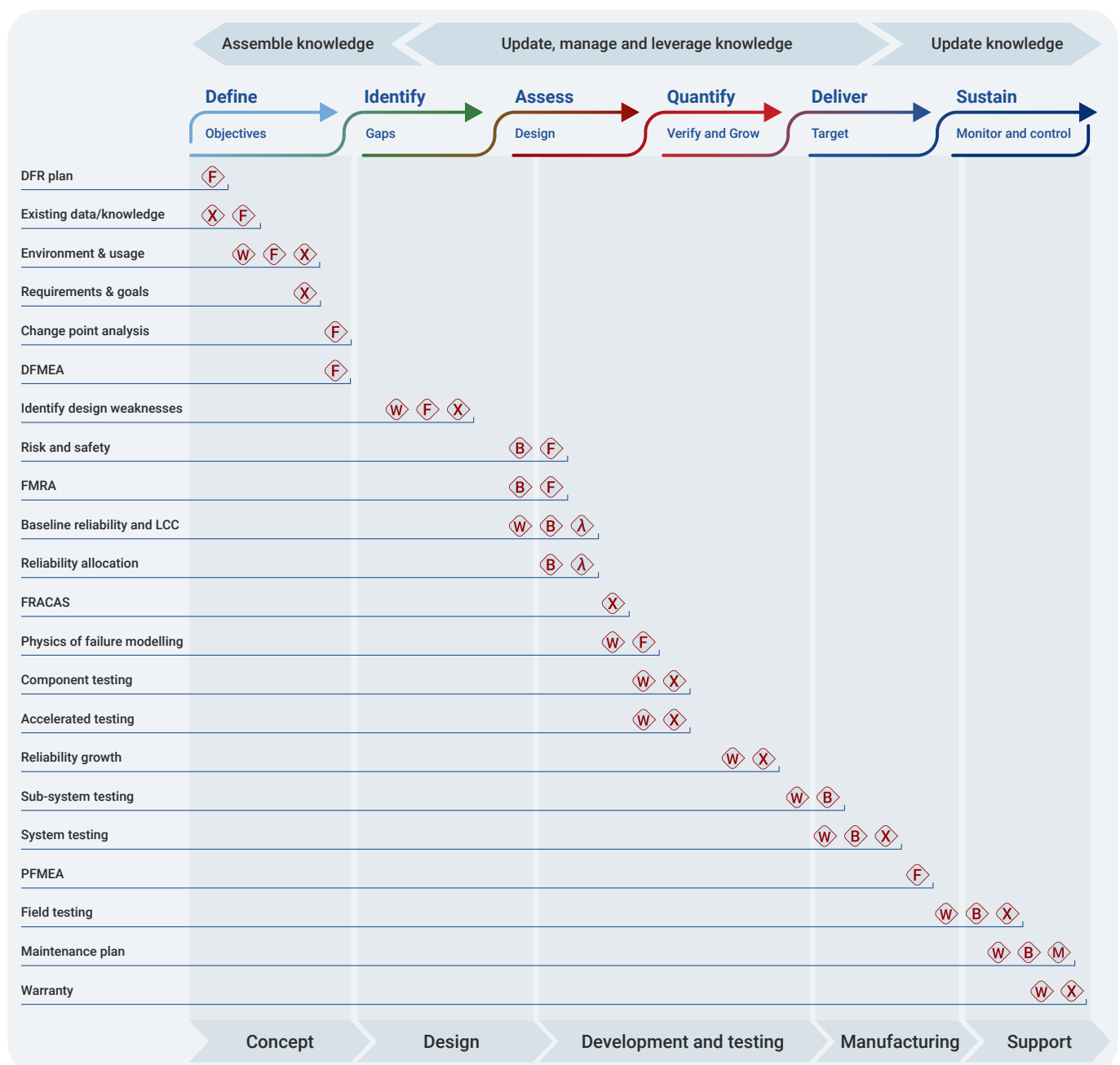
RELIABILITY SOLUTION PROVIDER FOR SOFTWARE AND SERVICES

We promote the use of engineering methodologies to evaluate and improve reliability and maintainability through software, training, and services. Our software products facilitate a comprehensive set of reliability and related analysis techniques. With an extensive curriculum of reliability training courses, focused on methodologies and the application of reliability software tools, customers can learn principles and concepts necessary to confidently apply within their organisation.

# Reliability analysis and management software

## UNIQUE AND INTEGRATED APPROACH FOR PRODUCT TEST, DESIGN AND MAINTENANCE OPTIMISATION

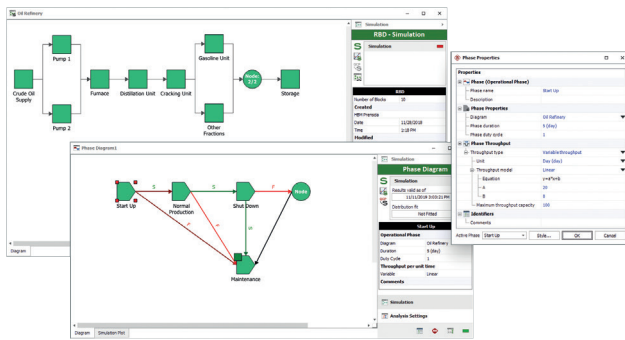
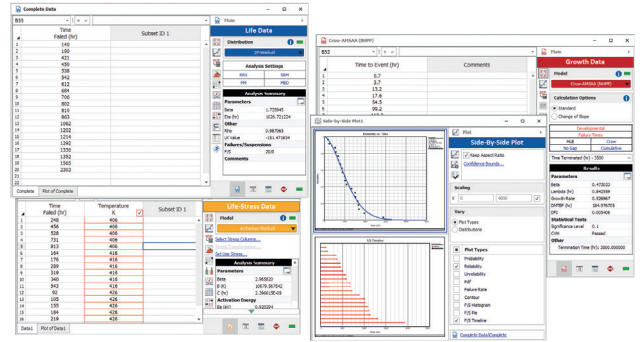
Our integrated reliability program unites any or all of ReliaSoft's reliability engineering products into a powerful, easy-to-deploy, enterprise-capable reliability solution. It provides intelligent integration between reliability program activities and tools, while simultaneously facilitating effective information sharing and cooperation between engineering teams of any size. The end result is the ability to maximise the efficiency and effectiveness of reliability activities, which results in time savings, agility and reductions in both time-to-market and cost, while maximising the achieved reliability and associated ROI.



# Weibull++

## LIFE DATA ANALYSIS, ACCELERATED TESTS AND RELIABILITY GROWTH MODELS

Complete life data analysis tool utilising multiple lifetime distributions, warranty and degradation data analysis, and DOE analysis with a clear and intuitive interface geared toward reliability engineering. The software offers optionally licensed features for Accelerated Life Testing to design accelerated life test, as well as Reliability Growth module to analyse data from both developmental testing and fielded repairable systems, monitor reliability improvements over time and predict failures before they occur.



# BlockSim

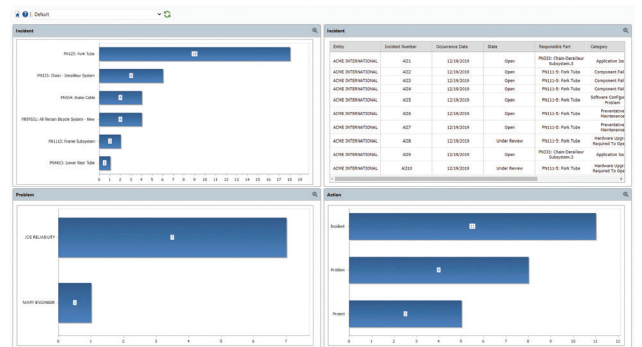
## SYSTEM MODELLING AND RAM ANALYSIS

A comprehensive platform for system reliability, availability, maintainability, and related analyses that allows you to model the most complex systems and processes using reliability block diagrams (RBDs), fault tree analysis (FTA) or Markov diagrams. The software offers optionally licensed features for Process Flow to upstream maintenance optimisation for any processes and chemical industries, as well as Event Analysis to model and run complex analyses for any probabilistic or deterministic scenario.

# XFRACAS

## WEB-BASED FRACAS

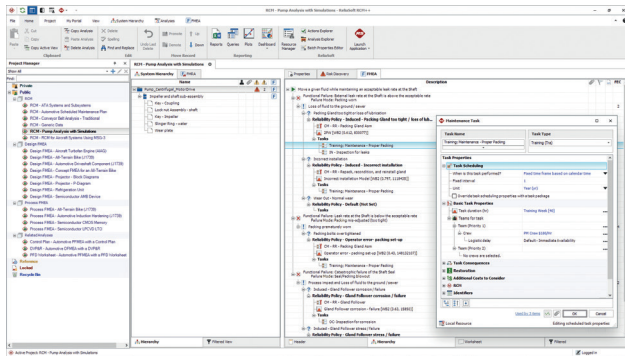
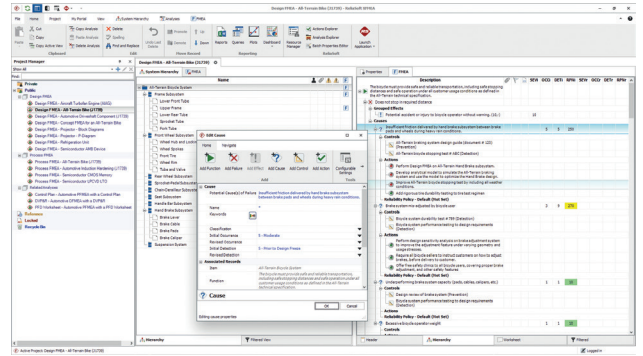
Designed for the acquisition, management and analysis of product reliability, quality and safety data from multiple locations, along with team-based problem solving and related activities. This web-based, enterprise-wide FRACAS system is highly configurable, allowing you to customise the system to meet your organisation's particular needs – no custom programming required!



# XFMEA

## FMEA AND RELATED ANALYSES

Allows you to perform any type of FMEA analysis, including Design FMEA, System FMEA, Process FMEA and FMECA with extensive reporting capabilities and risk discovery tool. The software supports related analyses such as P-Diagrams, DVP&Rs (Test Plans), Design Reviews Based on Failure Mode (DRBFMs), Process Flow Diagrams and Process Control Plans.



# RCM++

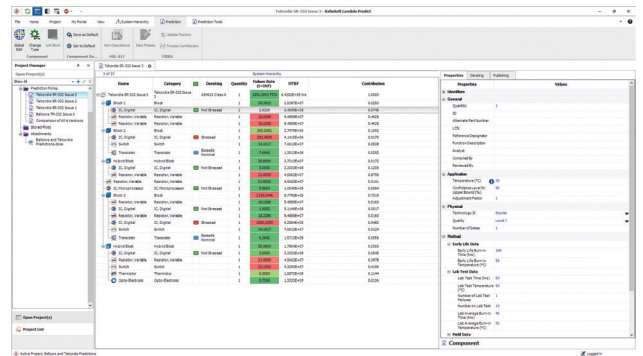
## RISK ANALYSIS, MAINTENANCE STRATEGY DETERMINATION AND ASSET CRITICALITY

Facilitates the RCM analysis approach to improve reliability of the assets and optimise maintenance planning. The software supports all the major RCM industry standards, such as ATA MSG-3, SAE JA1011, SAE JA1012, SAE J1739 (2021) and provides full-featured capabilities for FMEAs and related analyses. Industry-specific version of RCM++, MPC software to support the MSG-3 process for aircraft systems and powerplant analysis, is available as well.

# Lambda Predict

## RELIABILITY PREDICTION, ALLOCATION AND DERATING ANALYSIS

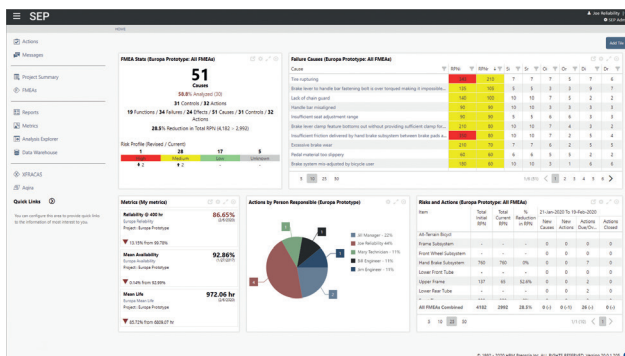
Facilitates reliability prediction analysis based on the major published standards. The software offers full set of supporting tools, including easy-to-use component library functionality, a reliability allocation utility, and derating analysis with complete array of calculated results, graphical charts and customisable reports.



# SEP

## WEB PORTAL FOR RELIASOFT APPLICATIONS

Track reliability metrics and project progress, access ReliaSoft desktop applications and share reliability analysis results from any web-enabled device. The software provides a personalised overview for each user, with quick and convenient access to the metrics, analysis summaries, dashboards, assigned actions and messages that are relevant to you.



# Reliability training and solution services

## TRAINING AND EDUCATION

Our experts have provided reliability training and education to more than 20,000 engineering professionals from more than 4,500 companies and government agencies. Our core competencies in reliability engineering theory, combined with best practice applications and powerful software solutions, make us uniquely qualified to offer results-oriented training that can:

- Introduce managers to the practical benefits of reliability concepts and tools
- Train new reliability engineers in fundamental methods and tools
- Challenge experienced engineers to explore more advanced concepts and capabilities



## ENGINEERING SOLUTION SERVICES

Our team offers a uniquely powerful combination of industry insight, unparalleled subject mastery and, most important of all, direct access to all ReliaSoft's global resources, expertise, and industry experience. We offer support for projects of any size and scope, supporting all stages of an asset's life cycle. Whenever your organisation does not have sufficient time, expertise or objectivity in-house to accomplish specific reliability and maintainability goals, turning to our experts can prove to be the most effective and economical solution. Whether you need a quick statistical analysis, a complete assessment of your reliability program plan or something in between, we are ready to help.



## ABOUT US

We are a global leader in providing technology and engineering software products and services for reliability, durability, and performance. We deliver a broad range of engineering solutions that deliver compelling value to our customers for the design and development of reliable, robust products, and reducing life cycle costs. By offering a range of industry leading software (nCode and ReliaSoft), training, and engineering services, we enable companies to enhance returns on investment and operational success through design and certification, optimised processes, data management and processing, and CAE simulation.

For more information visit: [www.hbkworld.com/reliability](http://www.hbkworld.com/reliability)

**HBK – Hottinger Brüel & Kjær**

[www.hbkworld.com](http://www.hbkworld.com)

[info@hbkworl.com](mailto:info@hbkworl.com)

© 2024 Hottinger Brüel & Kjær Inc. All rights reserved. All other product names, logos, trademarks, and service marks are the property of their respective owners.